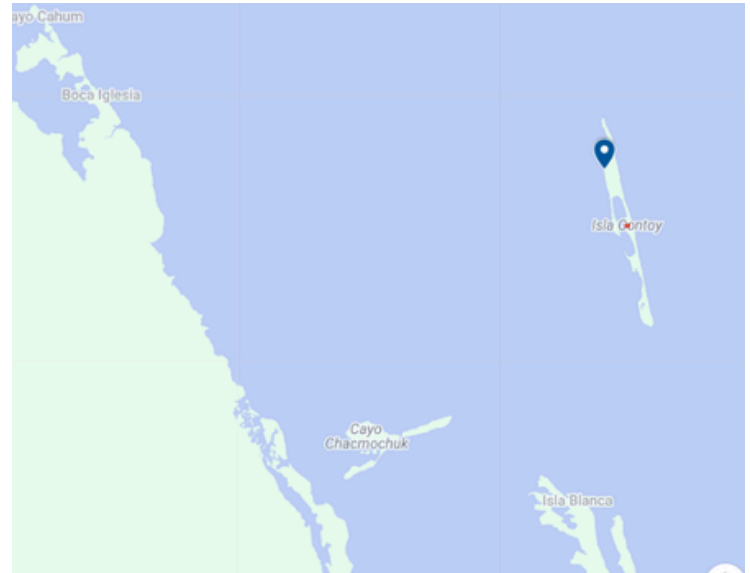


PROTECTION OF MARITIME RESOURCES IN CENTRAL AMERICA III (PHASE III)

The Phase III project represents a joint effort to strengthen the effective management of coastal and marine protected areas of the Mesoamerican Reef System. With financial contribution from the German Cooperation through the KfW, and the active participation of managers and co-managers of the CMPAs, this regional initiative enhances the protection of strategic ecosystems and contributes to sustaining the benefits they provide to local communities.



Location of Contoy Island



Contoy Island

Map Data © 2026 Google



Photo: Alexis García Rivero

SUSTAINABLE MANAGEMENT AND MARINE-COASTAL RESOURCES CONSERVATION OF THE ISLA CONTOY NATIONAL PARK AND NORTHERN ZONE OF THE CARIBE MEXICANO BIOSPHERE RESERVE

Country	Mexico
Coastal Marine Protected Areas (CMPAs)	<ul style="list-style-type: none"> Contoy Island National Park (PNIC)* and Caribe Mexicano Biosphere Reserve (RBCM)*
Manager	National Commission of Natural Protected Areas (CONANP)*
Civil Society Organization (CSO)	Pronatura Península de Yucatán, A.C. (PPY)
Duration	August 2024 - August 2027.
Reach	68,005 hectares of protected area and 50 beneficiaries

* Acronyms refer to the names in Spanish

PROJECT SUMMARY

The project aims to strengthen four subprograms of the PNIC and RBCM Management Programs. The operational capacities of the CMPAs will be improved by conducting a structural and functional assessment to identify priority areas in coral reef, seagrass, mangrove, and coastal dune ecosystems, and adopting standardized monitoring protocols.

Regarding supervision and surveillance, personnel will be trained and equipped, and experiences will be shared with other areas of the MAR to optimize strategies. In addition, a fisheries management system will be implemented that will include ecological and socioeconomic analyses of the lobster fishery, and training will be conducted to promote sustainable fishing practices and improve the infrastructure of fishing camps.

Actions will also be undertaken to restore coral reefs, including training for CMPA staff in scuba diving and restoration techniques, as well as the formation of a community brigade to respond to extreme weather events that may affect these ecosystems.

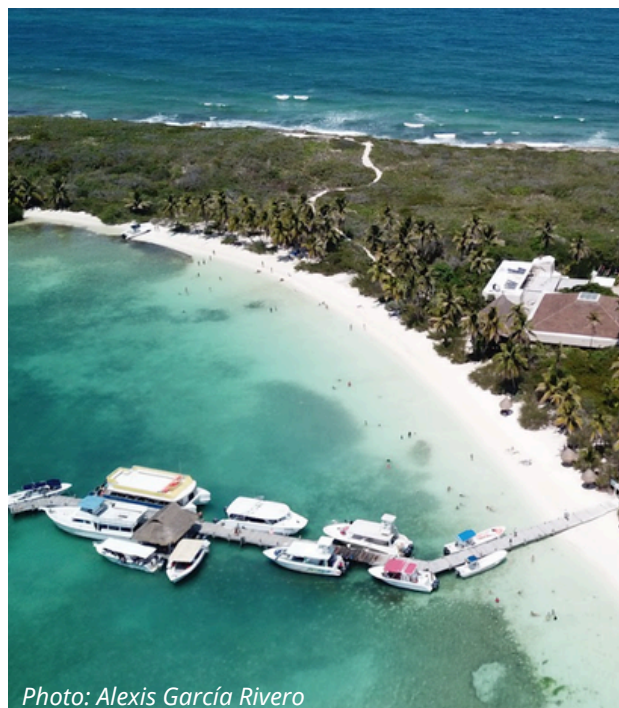


Photo: Alexis García Rivero

KEY TOPICS AND ACTIVITIES



CONSERVATION OF NATURAL RESOURCES

- Strengthen surveillance and coral restoration capacities in CMPAs through the provision of equipment, specialized training, and collaborative work between institutions and communities, including CONANP staff and key stakeholders in coral reef recovery.
- Prepare a diagnosis of fragile and sensitive areas, including a feasibility assessment of monitoring protocols for coral reefs, mangroves, coastal dunes, and seagrass beds.
- Train post-storm reef response brigades.



SUSTAINABLE USE WITH LOCAL PARTICIPATION

- Develop a comprehensive assessment of the spiny lobster fishery (biological, socioeconomic, and governance) and implement fisheries surveillance.
- Rehabilitate the infrastructure of the PNIC fishing camp.
- Identify and develop a sustainable fishing practice for spiny lobster and implement workshops and training courses for the adoption of sustainable fishing practices.



STRENGTHENING AMONG KEY STAKEHOLDERS AND GOVERNANCE

- Strengthen coordination and cooperation between the PNIC and the northern zone of the RBCM.
- Train staff in coastal marine resource management, promoting exchanges with other Mesoamerican Reef CMPAs.
- Strengthen inter-institutional coordination with other government agencies, including the inspection and verification groups, on matters of supervision and oversight.

Visit the QR code to learn more:

