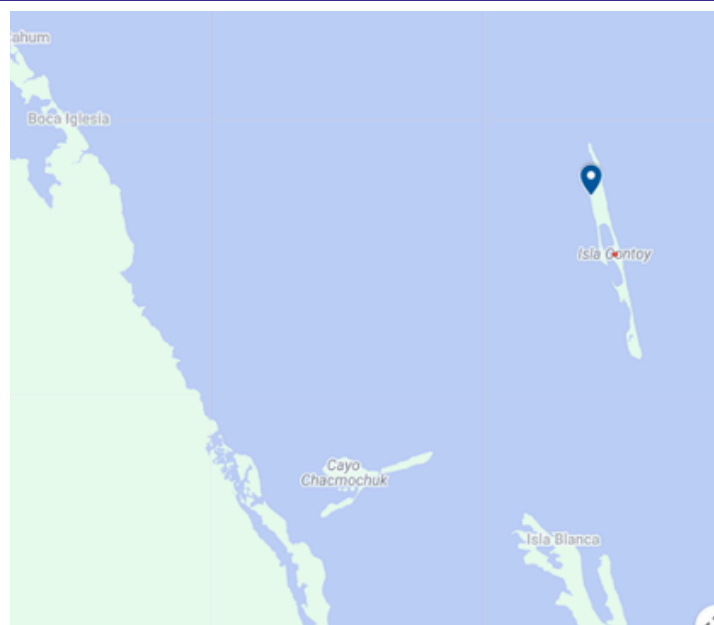


Sustainable Management and Marine-Coastal Resources Conservation of the Isla Contoy National Park and Northern Zone of the Mexican Caribbean Biosphere Reserve



Location of Contoy Island and the Mexican Caribbean Biosphere Reserve



Contoy Island

Map Data © 2025 Google

COUNTRY

México

COASTAL MARINE PROTECTED AREA (CMPA)

Contoy Island National Park (PNIC) and Mexican Caribbean Biosphere Reserve (RBCM)

CO MANAGER

National Commission of Natural Protected Areas (CONANP)

CIVIL SOCIETY ORGANIZATION (CSO)

Pronatura Península de Yucatán, A.C. (PPY)

DURATION:

August 2024 - August 2027.

* Acronyms refer to the names of the organizations in Spanish

PROJECT SUMMARY:

The project aims to strengthen four subprograms of the PNIC and RBCM Management Programs. The operational capacities of the CMPAs will be improved by conducting a structural and functional assessment to identify priority areas in coral reef, seagrass, mangrove, and coastal dune ecosystems, and adopting standardized monitoring protocols.

Regarding supervision and surveillance, personnel will be trained and equipped, and experiences will be shared with other areas of the MAR to optimize strategies. In addition, a fisheries management system will be implemented that will include ecological and socioeconomic analyses of the lobster fishery, and training will be conducted to promote sustainable fishing practices and improve the infrastructure of fishing camps.

Actions will also be undertaken to restore coral reefs, including training for CMPA staff in scuba diving and restoration techniques, as well as the formation of a community brigade to respond to extreme weather events that may affect these ecosystems.

REACH

Protected area
68,005 hectares



Number of
beneficiaries
50



Photo: Alexis García Rivero

KEY TOPICS AND ACTIVITIES

CONSERVATION OF NATURAL RESOURCES

- Strengthen surveillance and coral restoration capacities in CMPAs through the provision of equipment, specialized training, and collaborative work between institutions and communities, including CONANP staff and key stakeholders in coral reef recovery.
- Prepare a diagnosis of fragile and sensitive areas, including a feasibility assessment of monitoring protocols for coral reefs, mangroves, coastal dunes, and seagrass beds.
- Train post-storm reef response brigades.

SUSTAINABLE USE WITH LOCAL PARTICIPATION

- Develop a comprehensive assessment of the spiny lobster fishery (biological, socioeconomic, and governance) and implement fisheries surveillance.
- Rehabilitate the infrastructure of the PNIC fishing camp.
- Identify and develop a sustainable fishing practice for spiny lobster and implement workshops and training courses for the adoption of sustainable fishing practices.

STRENGTHENING AMONG KEY STAKEHOLDERS AND GOVERNANCE

- Strengthen coordination and cooperation between the PNIC and the northern zone of the RBCM.
- Train staff in coastal marine resource management, promoting exchanges with other Mesoamerican Reef CMPAs.
- Strengthen inter-institutional coordination with other government agencies, including the inspection and verification groups, on matters of supervision and oversight.



The project "Protection of Maritime Resources in Central America III (Phase III)" represents a joint and ongoing effort to strengthen the effective management of marine and coastal protected areas of the Mesoamerican Reef System. With the financial support of the German Cooperation through KfW, and the active participation of local managers and implementers, this regional effort strengthens the protection of key ecosystems and the benefits they provide to communities. Learn more:

www.marfund.org