

MESOAMERICAN REEF RESCUE INITIATIVE (RRI)

Experts meeting to evaluate the preliminary results of the parametric insurance for reefs in the Mesoamerican Reef System (MAR)

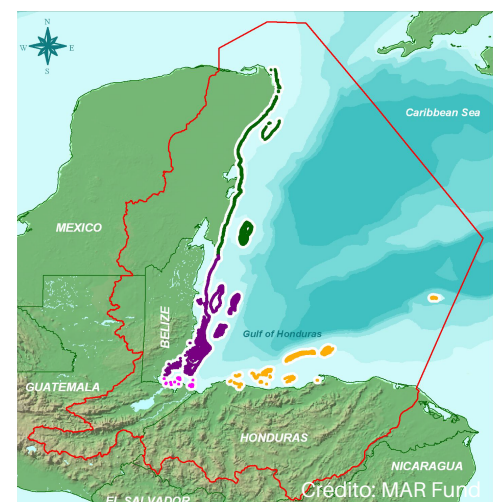
The first meeting to present the preliminary results of a parametric insurance for reefs was held on November 6, 2018 at the Auditorium of the UNAM, Puerto Morelos, Quintana Roo. The meeting included the participation of 20 experts from the academic sector, civil society organizations (CSOs), government and independent consultants.

This project was presented by the MAR Fund, a regional environmental fund whose primary goal is to protect the Mesoamerican Reef Region (MAR) shared by Mexico, Belize, Guatemala, and Honduras, through providing meaningful, long-term financial support and trustworthy reef management advice so that future generations can enjoy and benefit from a thriving reef system.

MAR Fund implements the Mesoamerican Reef Rescue Initiative (RRI).

This innovative project is carried out with the support of the German Government, through KfW, and implemented in collaboration with the Central American Commission for Environment and Development (CCAD), with the participation of the four countries that share the MAR region.

The Reef Rescue Initiative contemplates the creation of an Emergency Fund and an innovative financial mechanism, such as a **parametric insurance for reefs**. The latter aims to access immediate funds to address the emergency response actions and reef restoration, in case of damages caused by hurricanes.





For the creation of the insurance, MAR Fund works in collaboration with: The Coastal Resilience Initiative-The Nature Conservancy (TNC), Willis Towers Watson through the Global Ecosystem Resilience Facility (WTW / GERF), and the International Coral Reef Initiative (ICRI / UN Environment Small Grant Program). These collaborators are involved in activities such as the selection of the sites to be included in the insurance model, the risk analysis and vulnerability assessment of corals, the costs evaluation to repair the damages, and the elaboration of post-storm emergency response protocols.

The **objective** of this meeting was to present the preliminary results of the insurance design to experts in reef restoration and conservation, and thus obtaining feedback to strengthen the model. The analyzes evaluated included the correlation between the damages to reefs caused by hurricanes, the parameters that would activate the insurance, the actions required to repair the damages, and their cost in the selected sites to implement the insurance. The sites will be selected in the MAR using a prioritization tool that was developed by MAR Fund and TNC for this purpose.

Among the experts and participants in the meeting were: Claudia Ruiz (Coordinator of the Reef Rescue Initiative- MAR Fund), Fernando Secaira (Coastal Resilience - The Nature Conservancy), Anastazia Banaszak, Eric Jordán, and Lorenzo Álvarez Filip (Academic Unit of Reef Systems of ICMYL, UNAM in Puerto Morelos), Claudia Padilla (INAPESCA-Mexico), María del Carmen García (Director - National Park Reefs of Puerto Morelos), Mélina Soto (Healthy Reefs Initiative), Rosa Rodríguez (Academic Unit of Reef Systems, UNAM Puerto Morelos), Juan Carlos Huitrón (expert in rapid response actions), among others. A second meeting will be held in Guatemala City on November 13, 2018.

Expert recommendations include:

1. Consider the displacement of hurricane routes due to climate change,
2. Consider the tourist visitation to the reefs, because they have a social and economic value that should be contemplated for purposes of insurance coverage,
3. Determine the characteristics of hurricanes that cause greater damage to reefs.



¿Cuánto debe ser la cobertura del seguro?
Estimar costos de atención y restauración

| Intervención | Escenario 1 | Escenario 2 | Escenario 3 | Escenario 4 |
|--------------------|----------------------------------|--------------------------|--------------------------|--------------------------|
| Respuesta primaria | Respuesta primaria | Respuesta primaria | Respuesta primaria | Respuesta primaria |
| Sin restauración | Restauración ecológica extendida | Restauración ecológica | Restauración ecológica | Restauración ecológica |
| | | Restauración estructural | Restauración estructural | Restauración estructural |



Participants at the meeting believe that a parametric insurance for coral reefs is of great value to promote the importance of the Mesoamerican Reef and the ecosystem services it provides, mainly to sectors that depend directly on it. The recommendations made by the experts should be considered in order to design an insurance that covers the most valuable sites, (economically, recreationally or culturally). Likewise, to immediately cover the restoration needs of the reefs, taking into account not only the costs in terms of materials and transportation, but also the human capacity to carry out emergency and restoration actions.



**MESOAMERICAN REEF
RESCUE INITIATIVE**

**COLLABORATORS
PARAMETRIC INSURANCE FOR REEFS**

